

belmacz

# MIDNIGHT

---

Midnight debuts at Belmacz

18 February 2013

Midnight, the new addition to the best-selling Belmacz Beauty collection, will debut at Belmacz on 18 February 2013 and be available for general release 21 February 2013

Inspired by silver screen glamour, Julia Muggenburg created Midnight as a limited edition eye colour to celebrate the exhibition 'The private world of Greta Garbo' at Belmacz featuring possessions and personal items of the great actress.

This unique creamy shadow combines rich black pigments with a subtle hint of deep violet together with 24ct gold leaf which lends a subtle shimmer to this dark mysterious eyeshadow.

Belmacz Beauty is the offshoot of Belmacz fine jewellery. So the make-up and skin treatments within the line are imbued with the luxuriance of Belmacz jewels. Midnight's formula is infused with 24-carat gold leaf. Since ancient times, this natural ingredient has been highly prized as a luxurious treatment to enhance and heal the skin.

Suitable for use as a liner or eyeshadow. Midnight glides seamlessly onto lids and lash-lines lending a Smokey tone with a hint of violet. Apply midnight with a thin tipped sable brush for dramatic flicks.

Drinks and Demonstrations from 4pm – 6pm

To attend the Midnight press day and for more information contact Kayleigh Underdown at Belmacz: [beauty@belmacz.com](mailto:beauty@belmacz.com) or 0207 629 7863.

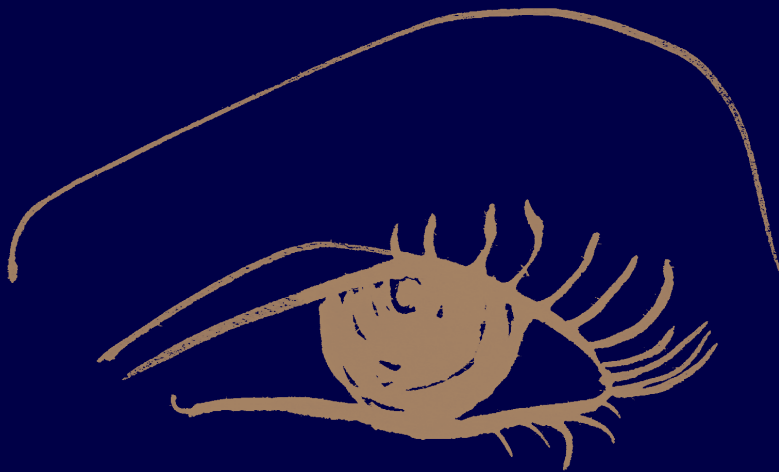


belmacz

MIDNIGHT

Midnight debuts at Belmacz

18 February 2013



Midnight, the new addition to the best-selling Belmacz Beauty collection, will debut at Belmacz on 18 February 2013 and be available for general release 21 February 2013

Inspired by silver screen glamour, Julia Muggenburg created Midnight as a limited edition eye colour to celebrate the exhibition 'The private world of Greta Garbo' at Belmacz featuring possessions and personal items of the great actress.

This unique creamy shadow combines rich black pigments with a subtle hint of deep violet together with 24ct gold leaf which lends a subtle shimmer to this dark mysterious eyeshadow.

Belmacz Beauty is the offshoot of Belmacz fine jewellery. So the make-up and skin treatments within the line are imbued with the luxuriance of Belmacz jewels. Midnight's formula is infused with 24-carat gold leaf. Since ancient times, this natural ingredient has been highly prized as a luxurious treatment to enhance and heal the skin.

Suitable for use as a liner or eyeshadow. Midnight glides seamlessly onto lids and lash-lines lending a Smokey tone with a hint of violet. Apply midnight with a thin tipped sable brush for dramatic flicks.

Drinks and Demonstrations from 4pm – 6pm

To attend the Midnight press day and for more information contact Kayleigh Underdown at Belmacz: [beauty@belmacz.com](mailto:beauty@belmacz.com) or 0207 629 7863.

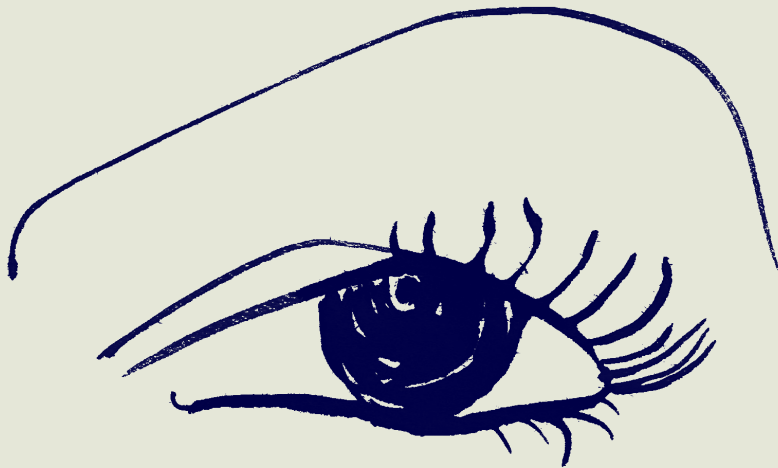
belmacz

MIDNIGHT

---

Midnight debuts at Belmacz

18 February 2013



Midnight, the new addition to the best-selling Belmacz Beauty collection, will debut at Belmacz on 18 February 2013 and be available for general release 21 February 2013

Inspired by silver screen glamour, Julia Muggenburg created Midnight as a limited edition eye colour to celebrate the exhibition 'The private world of Greta Garbo' at Belmacz featuring possessions and personal items of the great actress.

This unique creamy shadow combines rich black pigments with a subtle hint of deep violet together with 24ct gold leaf which lends a subtle shimmer to this dark mysterious eyeshadow.

Belmacz Beauty is the offshoot of Belmacz fine jewellery. So the make-up and skin treatments within the line are imbued with the luxuriance of Belmacz jewels. Midnight's formula is infused with 24-carat gold leaf. Since ancient times, this natural ingredient has been highly prized as a luxurious treatment to enhance and heal the skin.

Suitable for use as a liner or eyeshadow. Midnight glides seamlessly onto lids and lash-lines lending a Smokey tone with a hint of violet. Apply midnight with a thin tipped sable brush for dramatic flicks.

Drinks and Demonstrations from 4pm – 6pm

To attend the Midnight press day and for more information contact Kayleigh Underdown at Belmacz: [beauty@belmacz.com](mailto:beauty@belmacz.com) or 0207 629 7863.