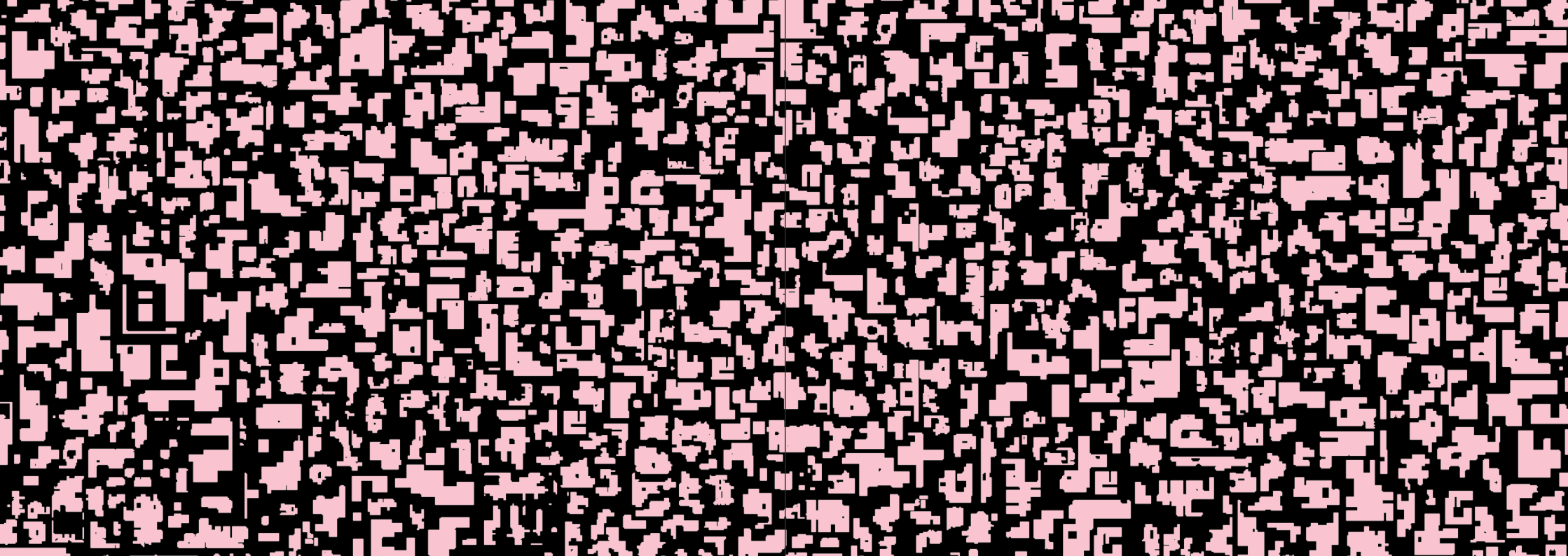


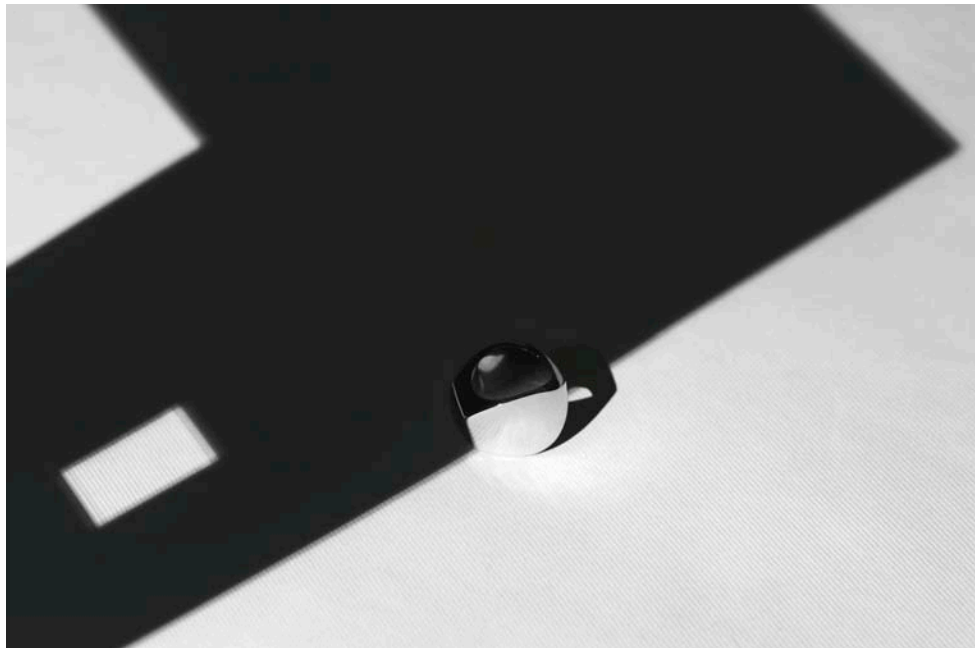
BELOW

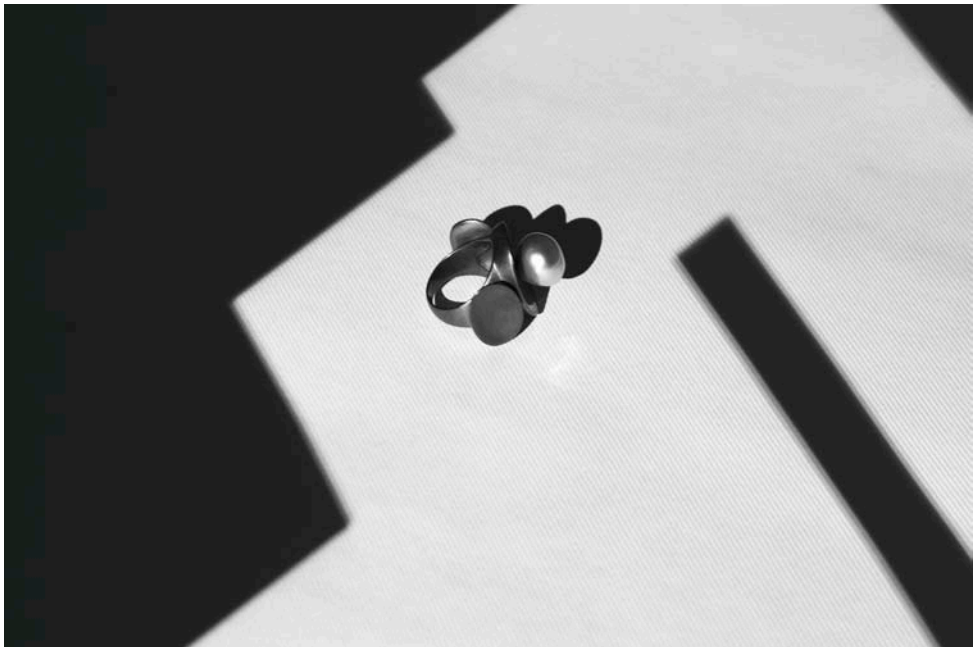




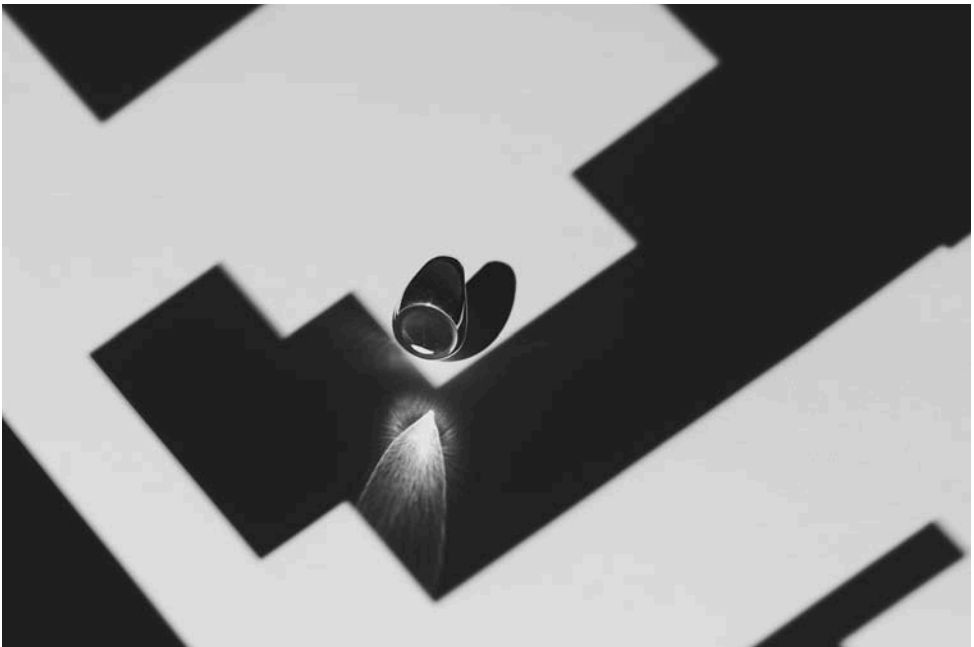
belmacz

1

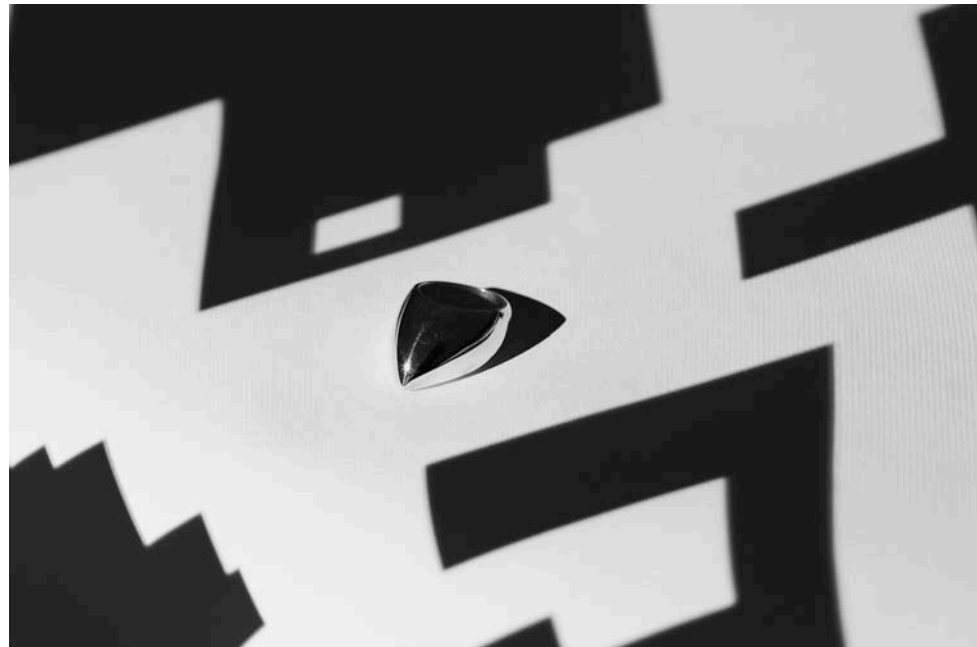


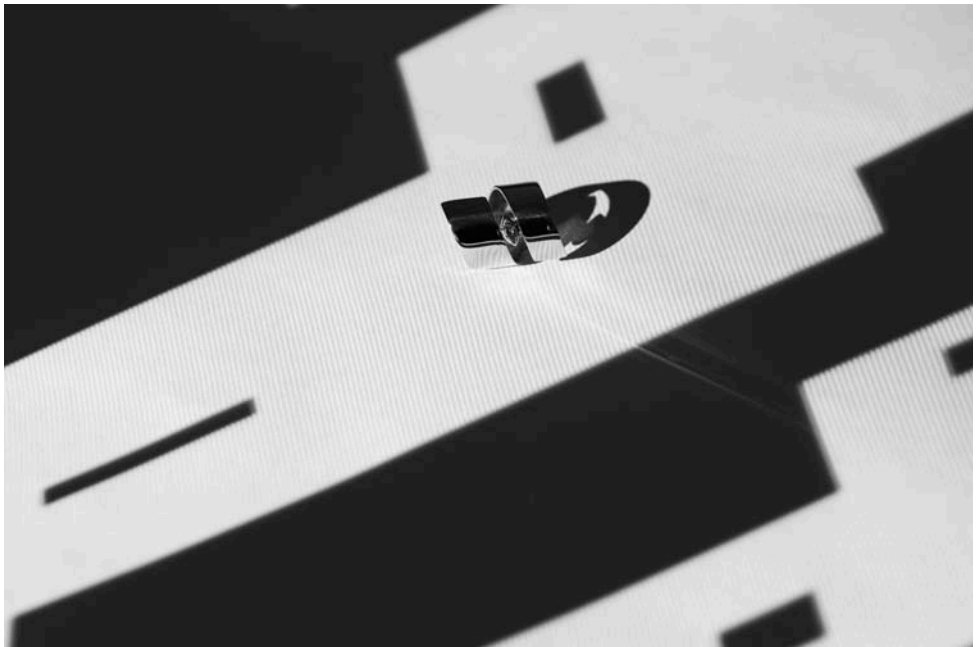


75

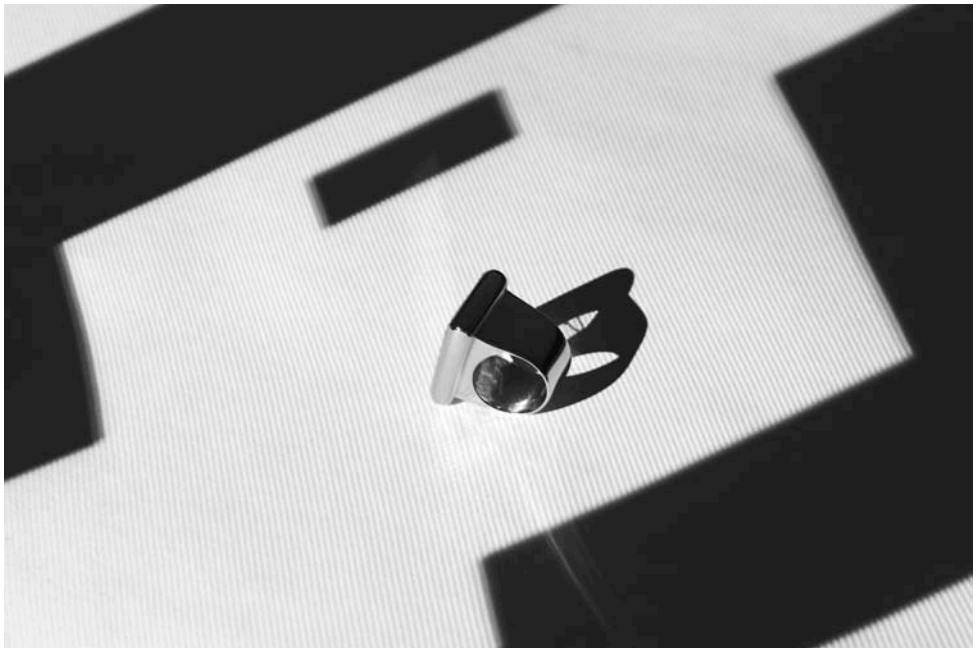


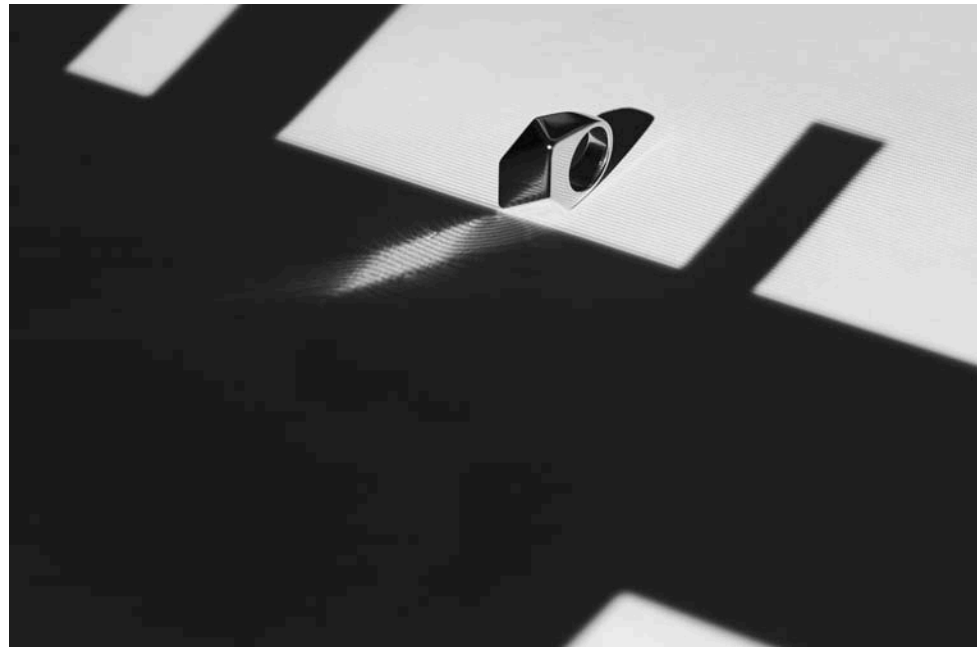
1





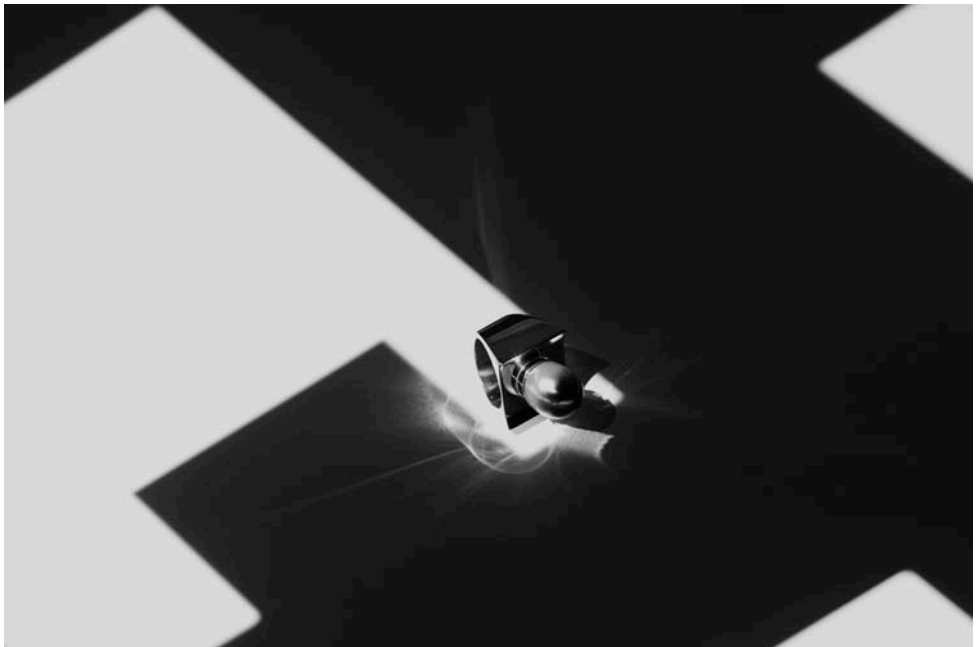
6







9



10



11



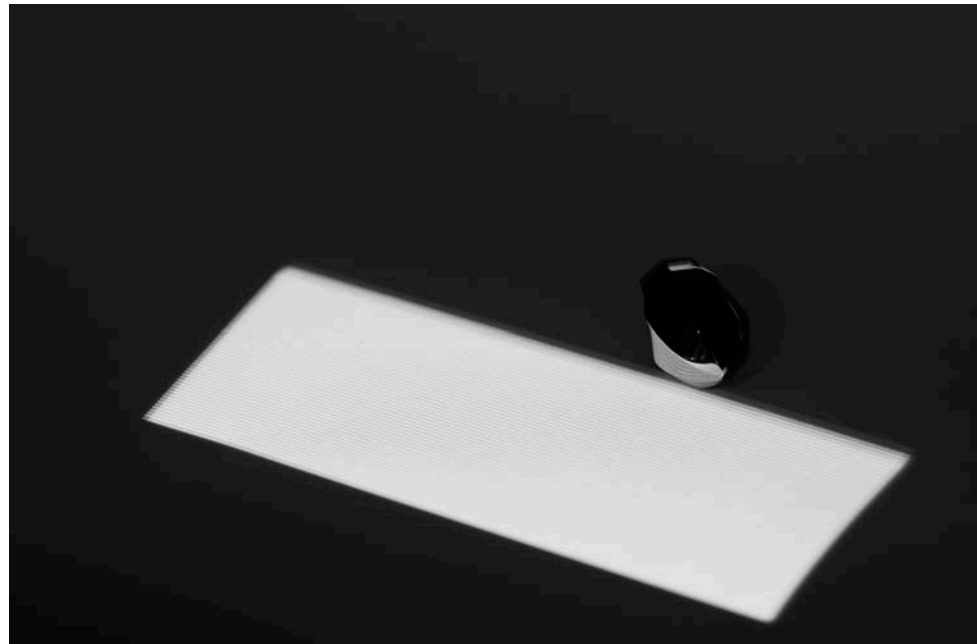
12



12



17



- 1** — *'Cadenas'* 18ct y gold ring
- 2** — *'Brandenburg'* blacked sterling silver and baroque pearl ring
- 3** — *'Monocle Ring'* 18ct y gold ring
- 4** — *'Odom'* 18ct y gold ring
- 5** — *'Tatlin'* marquise diamond and 18ct y gold ring
- 6** — *'Palladio'* turmalinated rock crystal and 18ct y gold ring
- 7** — *'Naum Gabo'* 18ct y gold ring

- 8** — *'Frankie'* 18CT y gold ring
- 9** — *'Lang'* baroque pearl and 18ct y gold ring
- 10** — *'Kling'* 18ct y gold ring
- 11** — *'Visconti'* antique cut diamonds and 18ct y gold necklace
- 12** — *'Cadaqués'* 18ct y gold ring
- 13** — *'Monocle'* rock crystal and 18ct y gold necklace
- 14** — *'Zepellin'* blacked sterling silver ring

Belmacz
52 Mount Street,
London W1K 2SF
tel: +44 (0)20 7629 7863
fax: +44 (0)20 7355 4529
e-mail: info@belmacz.com
www.belmacz.com

Photography:
Cristian Zuzunaga
www.cristianzuzunaga.com

Design:
Mind Design
www.minddesign.co.uk

